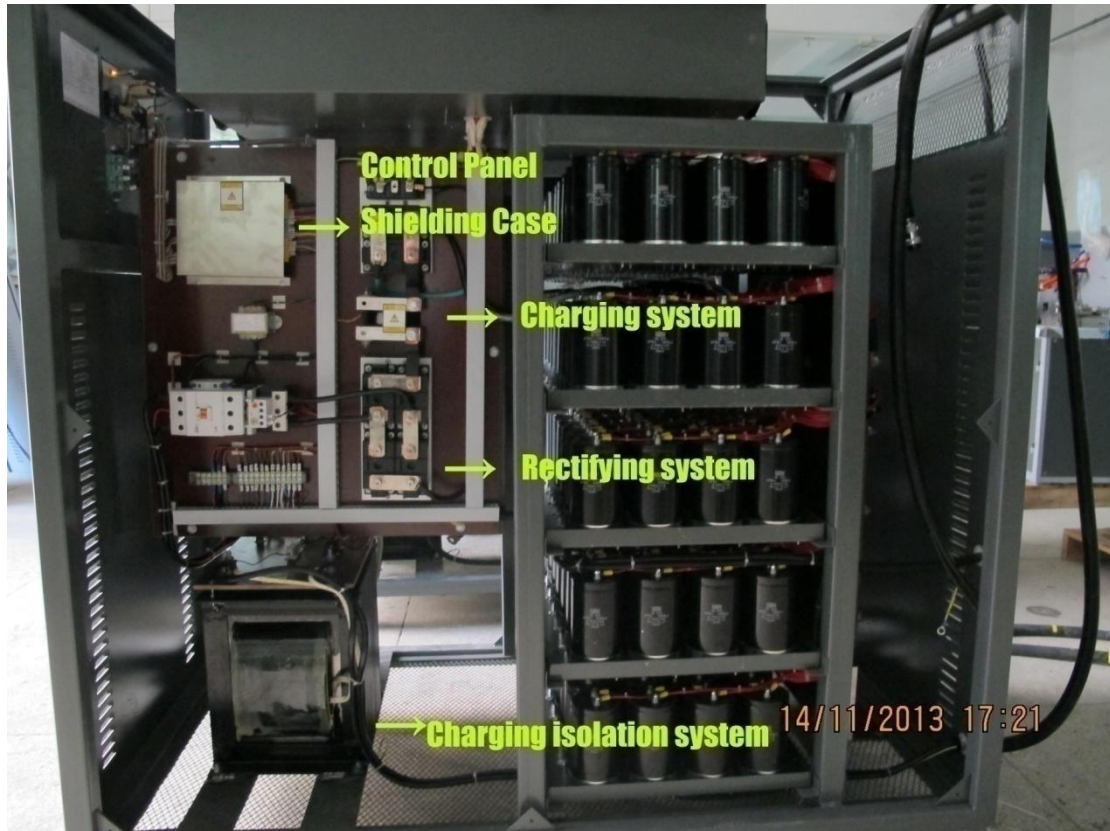
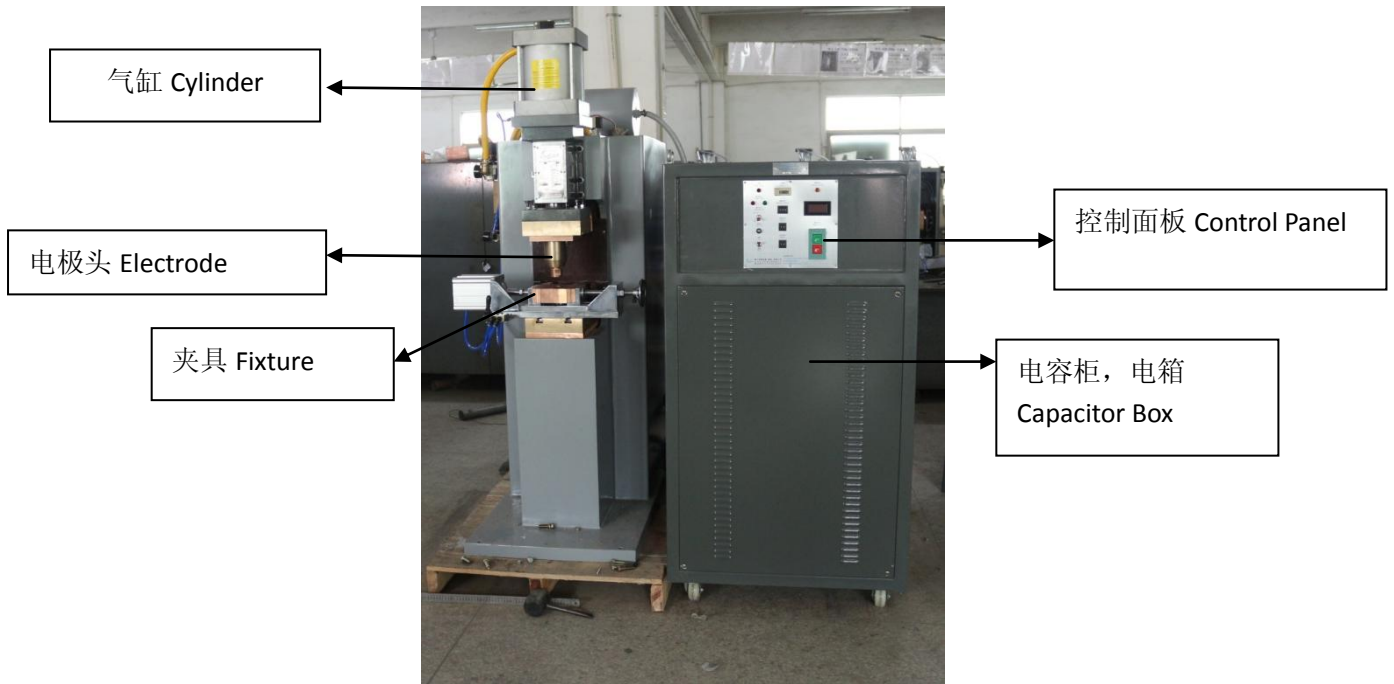


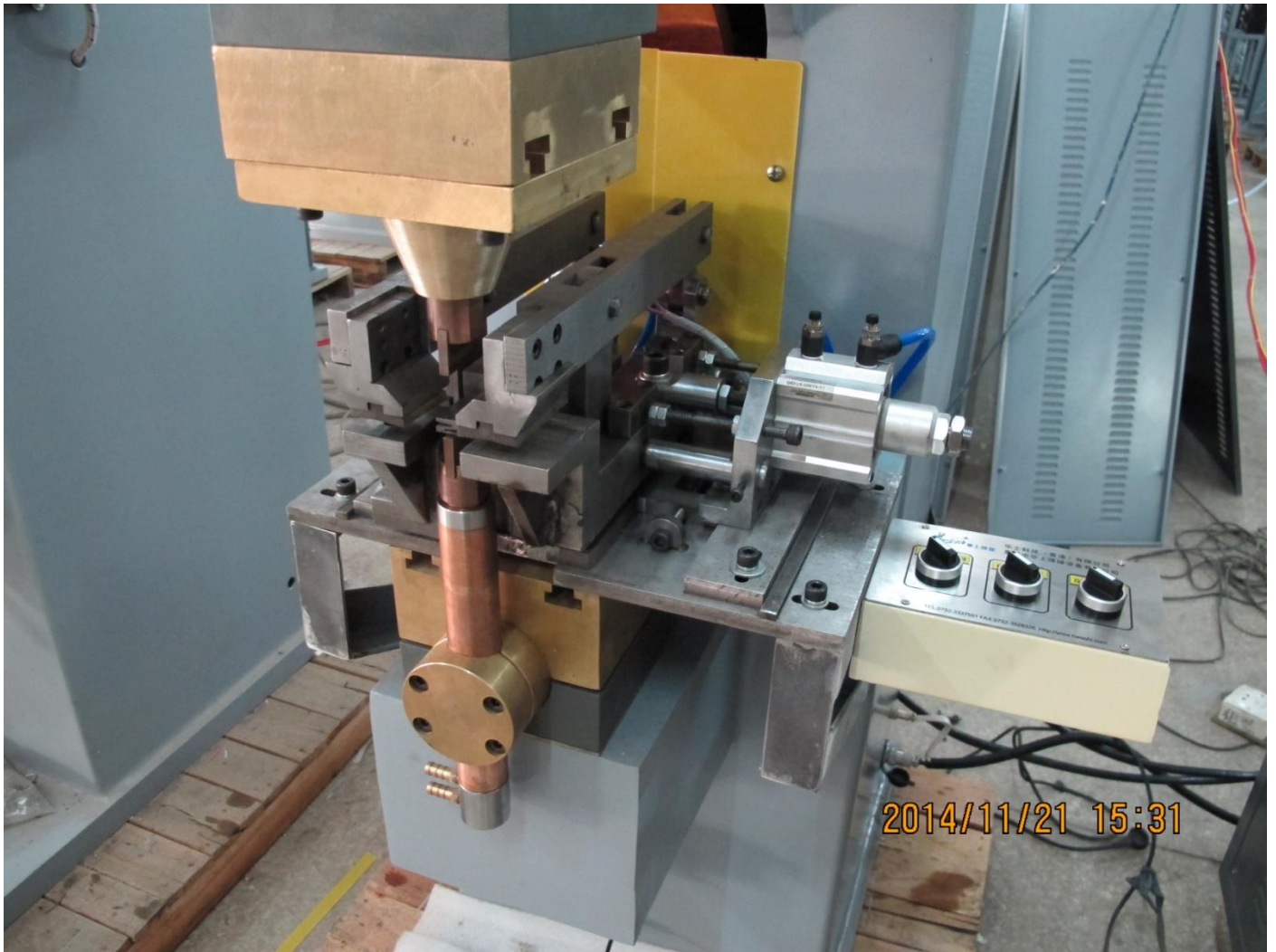
## Main Parts List for Capacitor Discharge Spot Welding Machine

| No. | Item                        | Specs        | Brand    | Country of Origin |
|-----|-----------------------------|--------------|----------|-------------------|
| 1   | Charging SCR                | KP-150       | SEMIKRON | Germany           |
| 2   | Discharging SCR             | SKKT1000-12E | SEMIKRON | Germany           |
| 3   | Rectifier Diode             | ZP-150A      | SEMIKRON | Germany           |
| 4   | Current Limiting Resistance | 100W/100Ω    | NANFA    | Hong Kong         |
| 5   | Capacitor                   | 1000UF/475V  | NCC      | Japan             |
| 7   | Charging Switch             | JMC-50       | LG       | South Korea       |
| 8   | Charging Control Board      | WD-20DC-1    | HWASHI   | China             |
| 9   | Discharging Control Board   | WD-20DC-2    | HWASHI   | China             |
| 10  | Machine Back Switch         | DS-231       | IDEC     | Japan             |
| 11  | Main Control Solenoid Valve | 4000#        | SANWO    | South Korea       |
| 12  | Pressing Solenoid Valve     | 4#           | SANWO    | South Korea       |
| 13  | Air Assembly                | 4000#        | SANWO    | South Korea       |

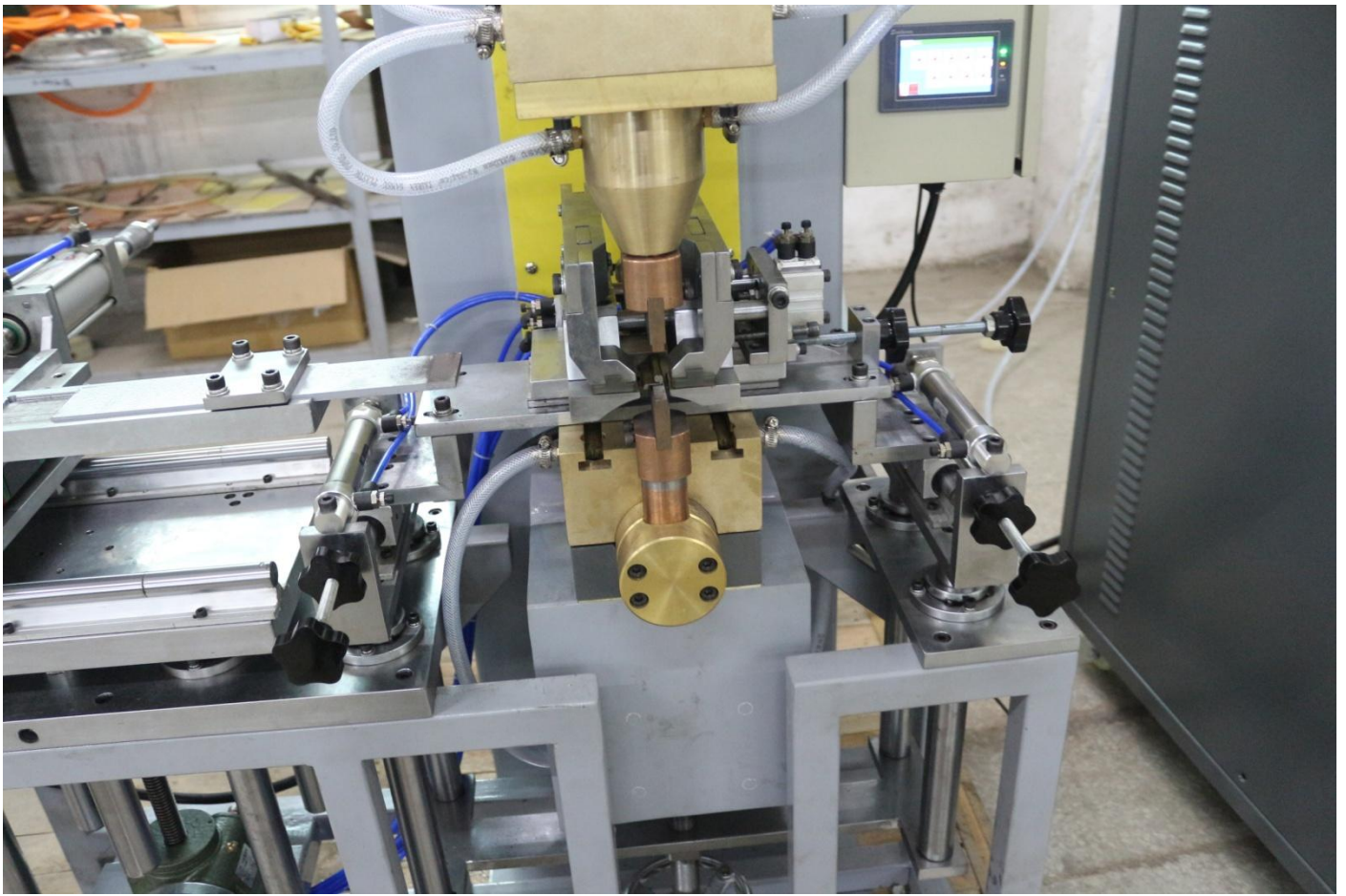




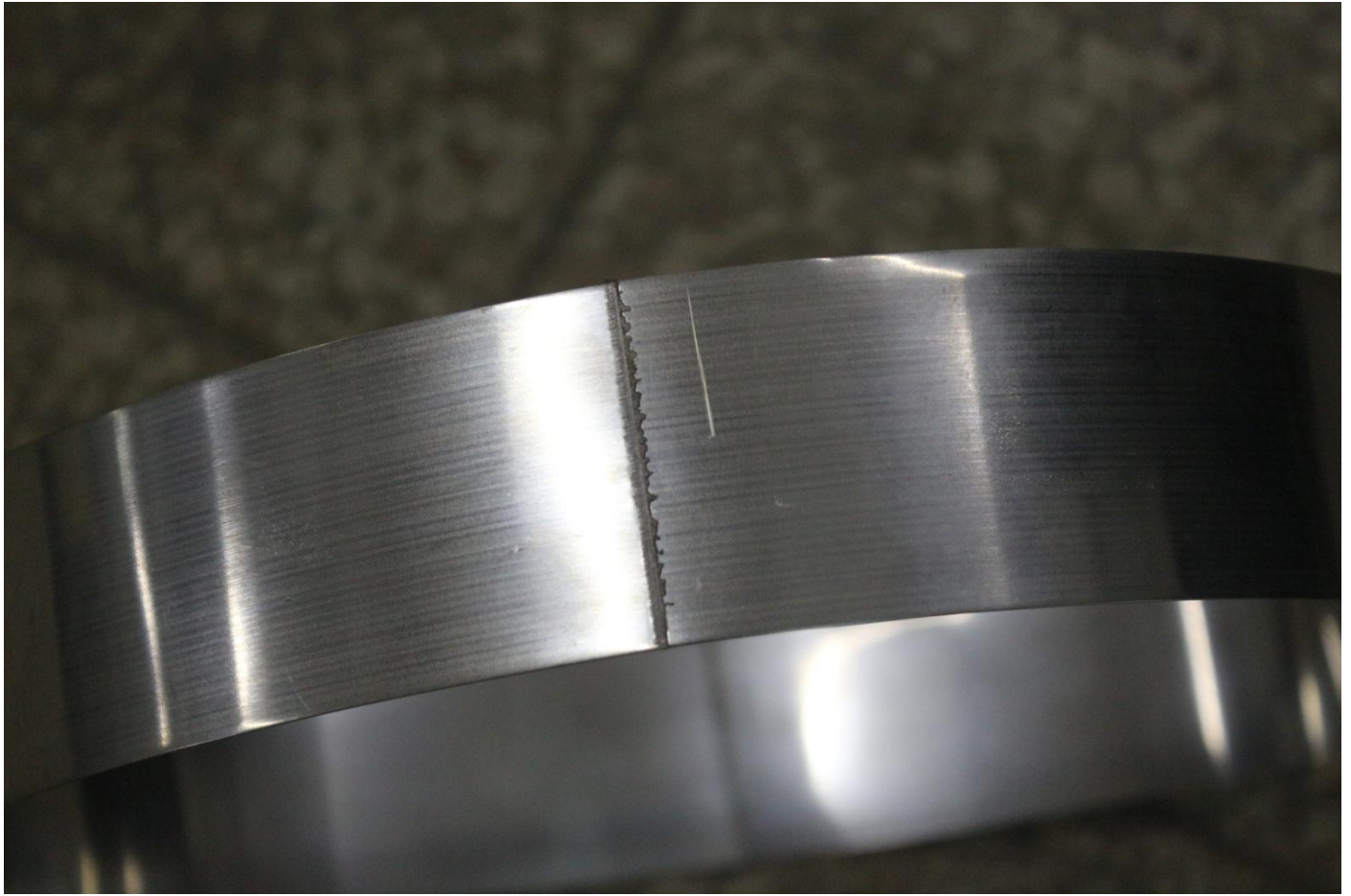












HWASHITECHNOLOGY (HONG KONG) CO.,LTD

Name: Ms Lilian Tao

Position: Sales Consultant

Mobile: +86 18933253252

Skype: Lilian Tao(shenzhen,guangdong)

wechat: t1191964702



Website: [www.hwashi.com](http://www.hwashi.com)

E-mail: [sales4@hwashi.com](mailto:sales4@hwashi.com)

Office :room 903,Xuyuan Building,No.5003Longgang  
Road,Shenzhen,Guangdong ,China 518000

Factory:Yuechang Honngtian Manageria Area, Xinxu Town , Huiyang,  
Huizhou,Guangdong, China, 516225